

**PLCB2 Antibody (N-term)**  
**Purified Rabbit Polyclonal Antibody (Pab)**  
**Catalog # AP9253A****Specification**

---

**PLCB2 Antibody (N-term) - Product Information**

Application	IHC-P, WB, FC,E
Primary Accession	<a href="#">Q00722</a>
Reactivity	Human
Host	Rabbit
Clonality	Polyclonal
Isotype	Rabbit IgG
Calculated MW	134024
Antigen Region	174-202

**PLCB2 Antibody (N-term) - Additional Information****Gene ID** 5330**Other Names**

1-phosphatidylinositol 4, 5-bisphosphate phosphodiesterase beta-2, Phosphoinositide phospholipase C-beta-2, Phospholipase C-beta-2, PLC-beta-2, PLCB2

**Target/Specificity**

This PLCB2 antibody is generated from rabbits immunized with a KLH conjugated synthetic peptide between 174-202 amino acids from the N-terminal region of human PLCB2.

**Dilution**

IHC-P~~1:50~100

WB~~1:1000

FC~~1:10~50

E~~Use at an assay dependent concentration.

**Format**

Purified polyclonal antibody supplied in PBS with 0.09% (W/V) sodium azide. This antibody is prepared by Saturated Ammonium Sulfate (SAS) precipitation followed by dialysis against PBS.

**Storage**

Maintain refrigerated at 2-8°C for up to 2 weeks. For long term storage store at -20°C in small aliquots to prevent freeze-thaw cycles.

**Precautions**

PLCB2 Antibody (N-term) is for research use only and not for use in diagnostic or therapeutic procedures.

**PLCB2 Antibody (N-term) - Protein Information****Name** PLCB2 ([HGNC:9055](#))

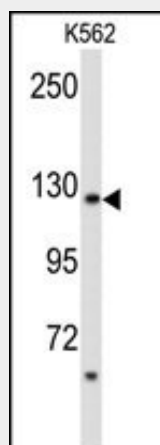
**Function** The production of the second messenger molecules diacylglycerol (DAG) and inositol 1,4,5-trisphosphate (IP3) is mediated by activated phosphatidylinositol-specific phospholipase C enzymes (PubMed:[1644792](#), PubMed:[9188725](#)). In neutrophils, participates in a phospholipase C-activating N-formyl peptide-activated GPCR (G protein- coupled receptor) signaling pathway by promoting RASGRP4 activation by DAG, to promote neutrophil functional responses (By similarity).

### PLCB2 Antibody (N-term) - Protocols

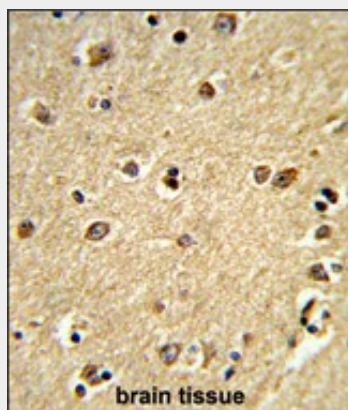
Provided below are standard protocols that you may find useful for product applications.

- [Western Blot](#)
- [Blocking Peptides](#)
- [Dot Blot](#)
- [Immunohistochemistry](#)
- [Immunofluorescence](#)
- [Immunoprecipitation](#)
- [Flow Cytometry](#)
- [Cell Culture](#)

### PLCB2 Antibody (N-term) - Images

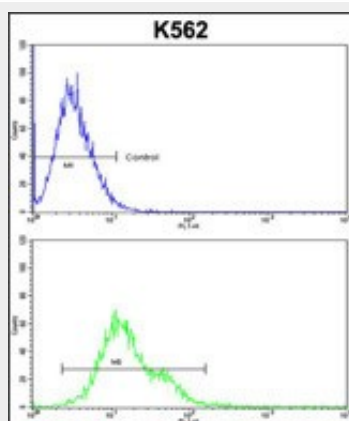


Western blot analysis of PLCB2 Antibody (N-term) (Cat. #AP9253a) in K562 cell line lysates (35ug/lane). PLCB2 (arrow) was detected using the purified Pab.



Formalin-fixed and paraffin-embedded human brain tissue reacted with PLCB2 Antibody (N-term), which was peroxidase-conjugated to the secondary antibody, followed by DAB staining. This data demonstrates the use of this antibody for immunohistochemistry; clinical relevance has not been

evaluated.



PLCB2 Antibody (N-term) (Cat. #AP9253a) flow cytometric analysis of k562 cells (bottom histogram) compared to a negative control cell (top histogram). FITC-conjugated goat-anti-rabbit secondary antibodies were used for the analysis.

#### **PLCB2 Antibody (N-term) - Background**

PLCB2 is the production of the second messenger molecules diacylglycerol (DAG) and inositol 1,4,5-trisphosphate (IP3) is mediated by activated phosphatidylinositol-specific phospholipase C enzymes.

#### **PLCB2 Antibody (N-term) - References**

Grinberg, S., et al., Am. J. Pathol. 175 (6), 2439-2453 (2009)  
Xiao, W., et al., Cancer Cell 16 (2), 161-171 (2009)